

花鳥畫譜

Kachō Gafu

flower-bird picture albums
from Meiji Era (1868-1912) Japan



Introduction

Flowers and birds are popular subjects for artists worldwide. In Japan this genre of art is called *kachōga* which means flower (ka) bird (chō) picture (ga). These pictures may be sold either individually or as a collection in book-form. One Japanese name for the latter is *gafu* (i.e., picture album). It was especially popular with artists and their patrons during the Meiji Era (1868-1912). More than sixty *kachō gafu* were published then which is almost three-quarters of all Japanese *kachōga* albums. This outpouring was likely stimulated by a dramatic cultural change that took place during the Meiji Era. During this period Japan made a rapid change from a feudal society to a modern nation. This transition was orchestrated by government leaders who feared that a powerful western country in Europe or North America would invade Japan and turn it into another of their colonies if Japan did not become as modern and powerful as these western countries. The program of modernization affected every aspect of Japanese life, even art. Western-style art materials and methods were promoted instead of their traditional far-eastern counterparts. Response to this call for westernization (i.e., modernization) was mixed. While there was a willingness to experiment with western ways there was also a reluctance to give up traditional far-eastern art. The Japanese continued to value accomplishments of past generations of their artists whose work often received renewed attention whenever a new art style was introduced. The new market for western-style art combined with revived interest in older styles of far-eastern art was likely the reason why so many *kachōga* albums were published during the Meiji Era. Fifty-five of these Meiji Era *kachōga* albums are profiled in this virtual exhibition by including an example from each. These albums are part of the Reader Collection of Japanese Art. The following information is given for each example: album title, publication date, author (artist, editor or publisher), names of flowers and birds, number of pictures in the album and their artistic style (i.e., Kanō, Ukiyo-e, Nagasaki, Nanga, Maruyama-Shijō or Nihonga). The characteristic features of each of these artistic styles are explained in two other exhibitions, entitled *Painting Styles Illustrated in 18th and 19th Century Japanese Books* and *Japanese Ukiyo-style Bird Prints*. The fifty-five albums are grouped and presented by artistic style as follows: Kanō – albums 1 to 6, Ukiyo-e – albums 7 to 17, Nagasaki – albums 18 and 19, Nanga – albums 20 to 29, Maruyama-Shijō – albums 30 to 35, Nihonga – albums 36 to 55.

1 **Tsunenobu Kachō Gafu** (Picture Album of Flowers and Birds by Tsunenobu), 1894, edited by Gessai Fukui, copies of twelve paintings by Tsunenobu Kanō (1636-1713), Kanō style, left picture - Japanese kerria (*Kerria japonica*) and green peafowl (*Pavo muticus*), right picture – common hill myna (*Gracula religiosa*) and yellow bunting (*Emberiza sulphurata*)



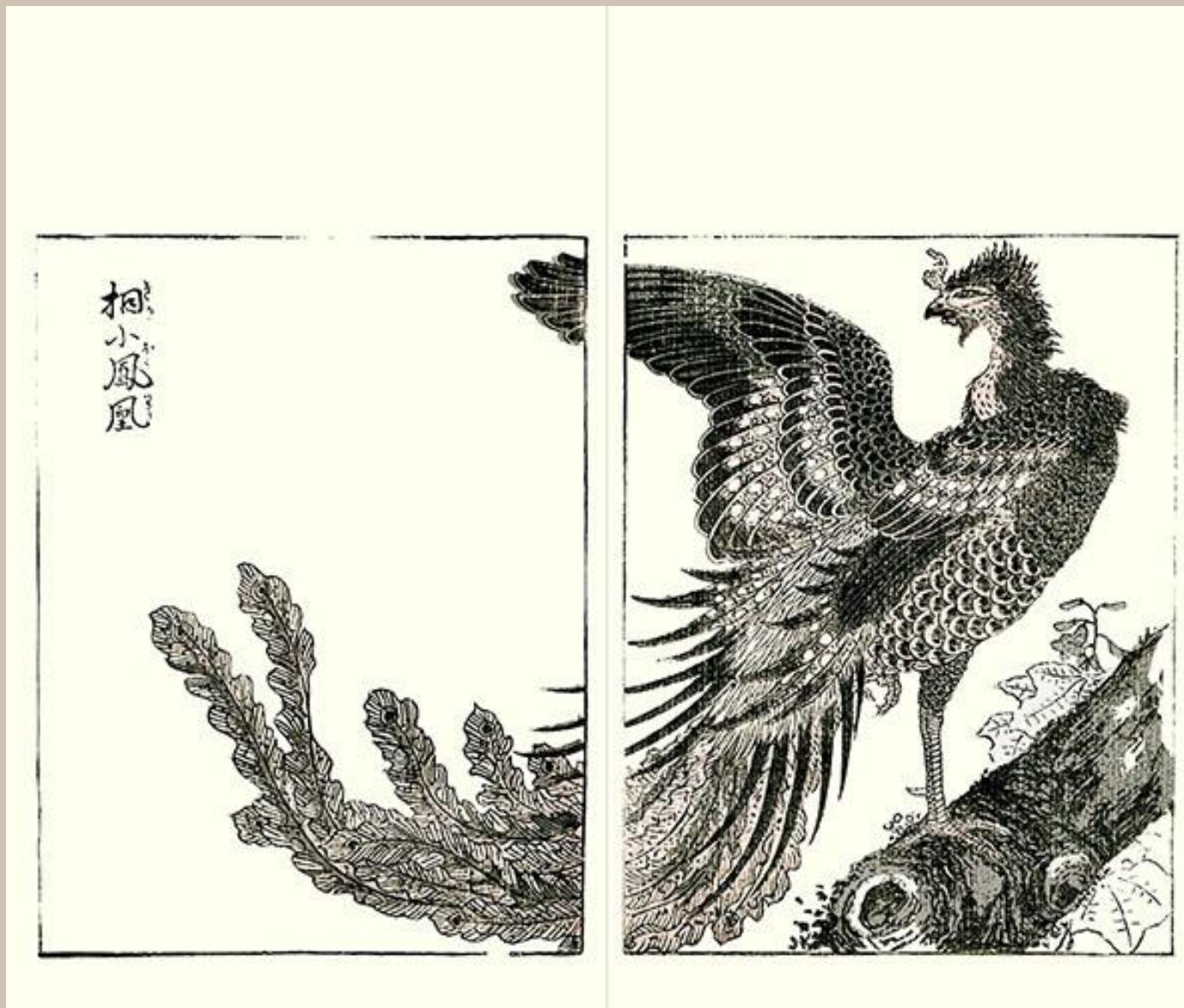
2 **Kanō Tsunenobu Kachō Gafu Kōhen** (Picture Album of Flowers and Birds by Tsunenobu Kanō Sequel), 1895, edited by Gessai Fukui, copies of twelve paintings by Tsunenobu Kanō (1636-1713), Kanō style, left picture – lespedeza (*Lespedeza* sp.) and Japanese quail (*Coturnix japonica*), right picture – Indian-shot (*Canna indica*) and Eurasian jay (*Garrulus glandarius*)



3 **Kanō Tsunenobu Kachō Gafu Zokuhen** (Picture Album of Flowers and Birds by Tsunenobu Kanō Sequel), 1895, edited by Gessai Fukui, copies of twelve paintings by Tsunenobu Kanō (1636-1713), Kanō style, left picture – Chinese arrowhead (*Sagittaria trifolia*) and mallard duck (*Anas platyrhynchos*), right picture – cotton-rose (*Hibiscus mutabilis*), common reed (*Phragmites australis*) and Daurian redstart (*Phoenicurus auroreus*)



4 **Kachō Gafu** (Picture Album of Flowers and Birds), undated, published by Hanzō Matsuzaki and **Kaishien Gafu**, **Kokuga** (Mustard Seed Garden Picture Album, Chinese Art), 1881, edited by Katsuzō Harada, copies of twenty-six pictures originally published in Ehon Eibutsu Sen (Picture Book of Selected Subjects), 1779, drawn by Yasukuni Tachibana, Kanō style, princess tree (*Paulownia tomentosa*) and mythical hō-ō bird



5 **Shoshoku Hikkei Kachō Gafu** (Picture Album of Flowers and Birds a Manual for Artisans), 1890, twenty-five pictures drawn by Itsujirō Miwa, Kanō style, Japanese kadsura (*Kadsura Japonica*), eulalia grass (*Miscanthus sinensis*) and scops owl (*Otus* sp.)



6 **Kachō Gafu** (Picture Album of Flowers and Birds), 1879, twenty-eight pictures drawn by Osui Asai, reprinted in 1886 by Shinkichi Ōkawa, Kanō style, Hall crabapple (*Malus halliana*) and golden pheasant (*Chrysolophus pictus*)



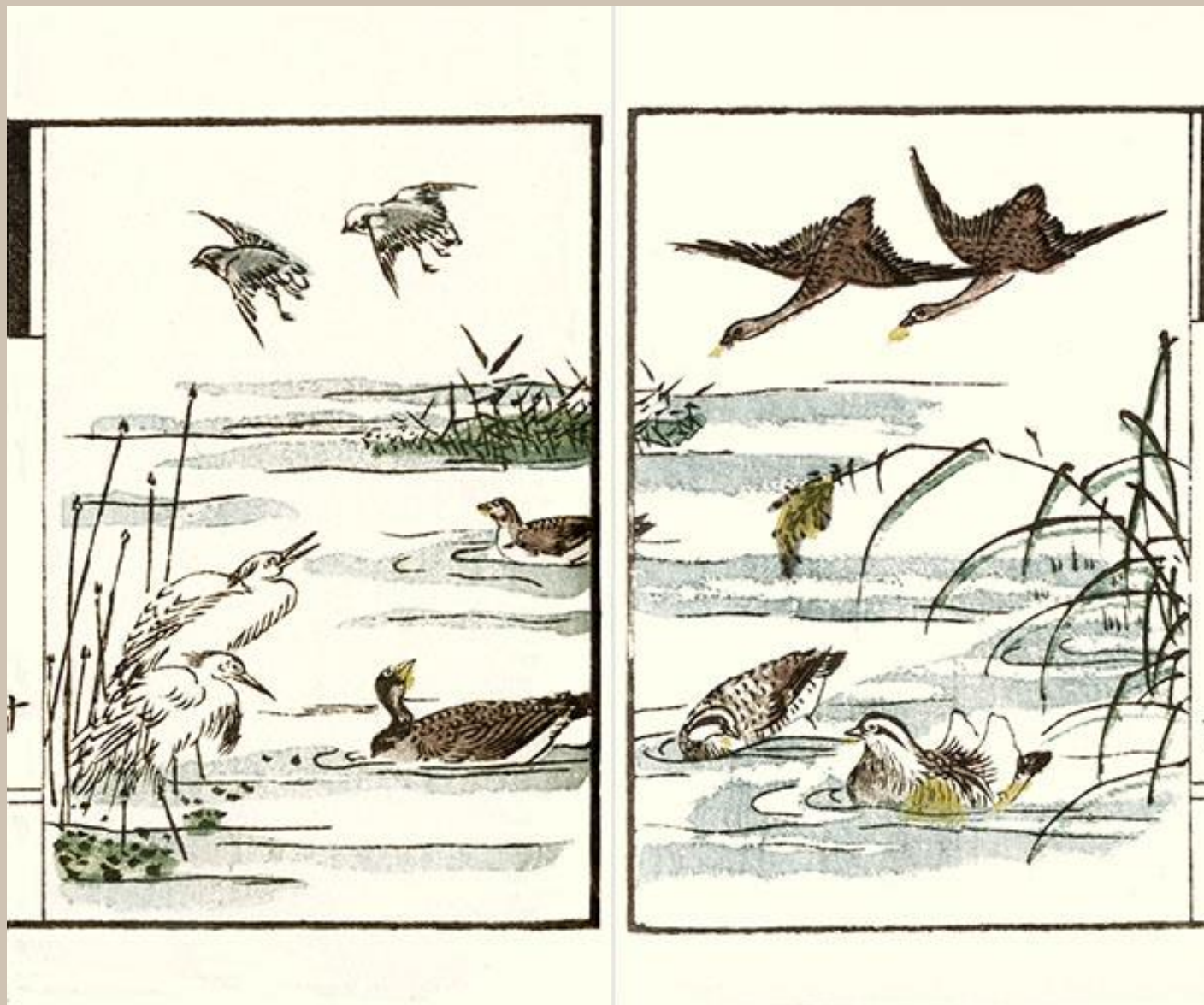
7 **Myōgi Kachō Gafu** (Picture Album of Flowers and Birds of Outstanding Skill), 1890, twenty pictures published by Katsugorō Inoue, Ukiyo style, left picture – morning-star lily (*Lilium concolor*), fringed pink (*Dianthus superbis*) and red avadavat (*Amandava amandava*), right picture – weeping forsythia (*Forsythia suspensa*) and Eurasian bullfinch (*Pyrrhula pyrrhula*)



8 **Senryūdō Gafu Kachō no Bu** (Picture Album by Senryūdō Flower and Bird Part), 1879, thirty-five pictures drawn by Kiyoshi Takizawa, Ukiyo style, tree peony (*Paeonia suffruticosa*), chrysanthemum (*Chrysanthemum* sp.) and Eurasian tree sparrow (*Passer montanus*)



9 **Jinbutsu Kachō Sōmoku Shūchin Gafu** (Pocket-size Picture Album of a Rare Collection of Flowers, Birds and Plants by a Talented Man), 1883, sixty-eight pictures drawn by Kiyoshi Takizawa, Ukiyo style, common reed (*Phragmites australis*), bulrush (*Scirpus* sp.), little egret (*Egretta garzetta*), little ringed plover (*Charadrius dubius*), white-fronted goose (*Anser albifrons*) and mandarin duck (*Aix galericulata*)



10 **Sōmoku Kachō Gafu** (Picture Album of Plants, Flowers and Birds), 1881, fifteen pictures drawn by Rinsai Shiba, Ukiyo style, common garden peony (*Paeonia lactiflora*) and green pheasant (*Pavo muticus*)



11 **Kachō Gafu** (Picture Album of Flowers and Birds), undated, forty pictures drawn by Rōsai, Ukiyo style, left picture – florist's chrysanthemum (*Chrysanthemum grandiflorum*) and great tit (*Parus major*), right picture – camellia (*Camellia japonica*), scabrous gentian (*Gentiana scabra*) and brown-headed thrush (*Turdus chrysolaus*)



12 **Kachō Sōmoku Saishiki Gafu** (Dainty Picture Album of Flowers, Birds and Plants), 1891, twenty-two pictures drawn by Satarō Nagao, Ukiyo style, left picture – Japanese wisteria (*Wisteria floribunda*) and varied tit (*Sittiparus varius*), right picture – tree peony (*Paeonia suffruticosa*) and Java sparrow (*Padda oryzivora*)



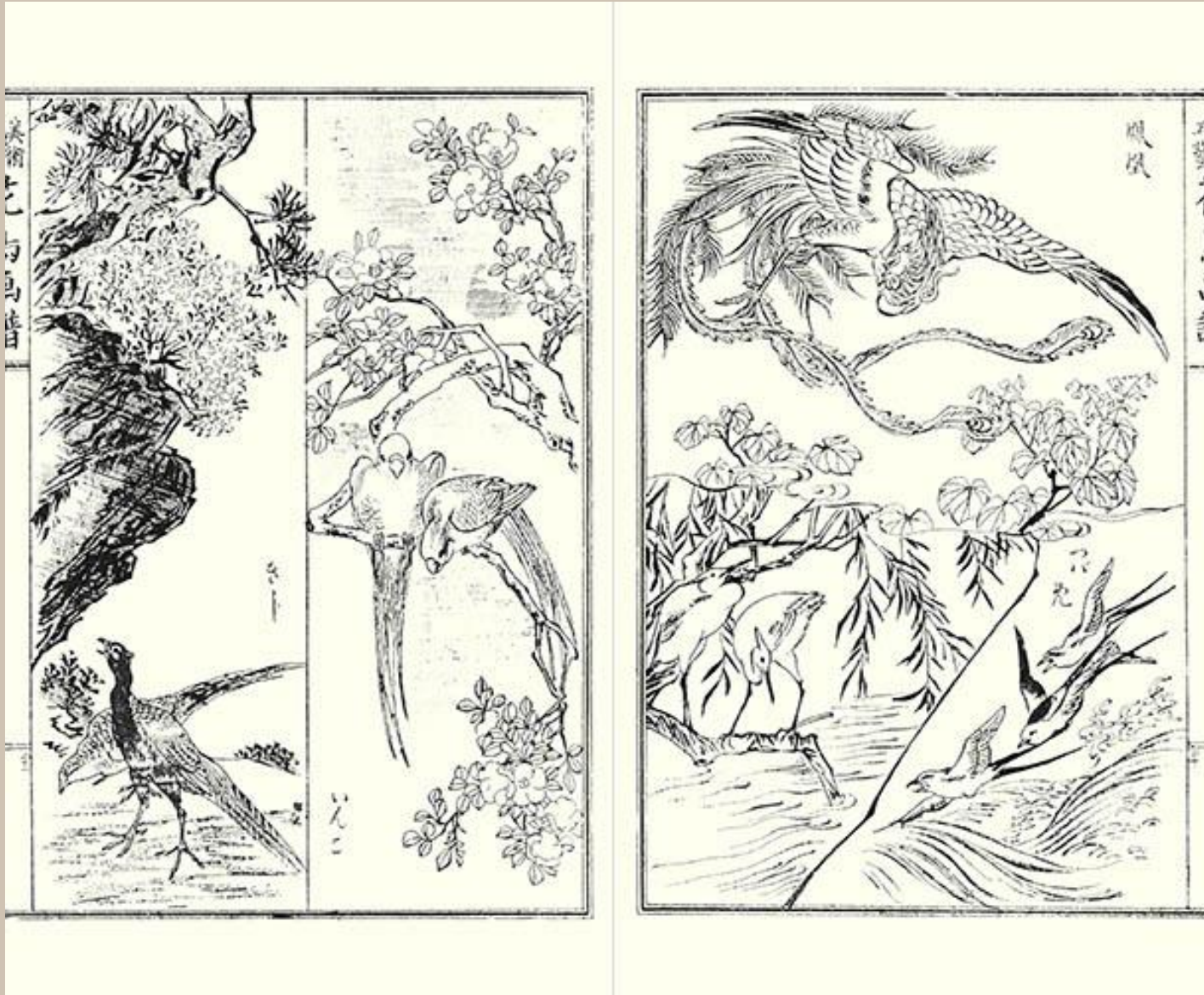
13 **Shinsen Kachō Gafu** (Picture Album of Newly Selected Flowers and Birds), 1897, fourteen pictures drawn by Shōgetsu Sakai, Ukiyo style, loquat (*Eriobotrya japonica*) and willow tit (*Poecile montanus*)



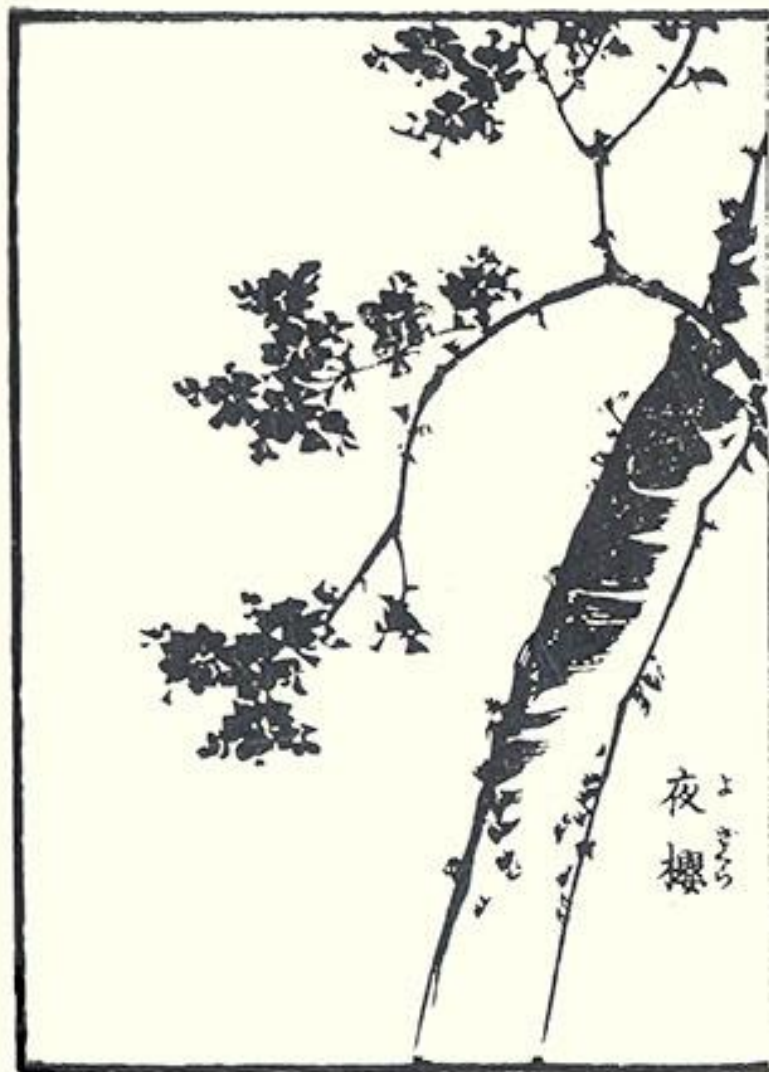
14 **Kōshōdō Gafu Kushahana no Bu** (Picture Album by Kōshōdō Flowering Plant Part), 1891, thirty-one pictures drawn by Shūken Handa, Ukiyo style, clematis (*Clematis patens*), plantain lily (*Hosta sp.*) and narcissus flycatcher (*Ficedula narcissina*)



15 **Bijutsu Kōgei Kachō Gafu** (Arts and Crafts Picture Album of Flowers and Birds), 1895, eighty-two pictures drawn by Tokuyama Yamano, Ukiyo style, left picture – azalea (*Rhododendron* sp.) and green pheasant (*Phasianus versicolor*), middle picture – camellia (*Camellia japonica*) and parakeet (*Psittacula* sp.), right picture – princess tree (*Paulownia tomentosa*), mythical hō-ō bird, little egret (*Egretta garzetta*) and barn swallow (*Hirundo rustica*)



16 **Kachō Gafu** (Picture Album of Flowers and Birds), 1907, thirty-six pictures drawn by Yoshimori Ikkōsai, Ukiyo style, left picture – red-crowned crane (*Grus japonensis*), right picture – cherry (*Prunus* sp.)



17 **Kachō Gafu** (Picture Album of Flowers and Birds), undated, forty-nine pictures drawn by Yoshiharu Utagawa, Ukiyo style, left top picture – clematis (*Clematis patens*) and lesser cuckoo (*Cuculus poliocephalus*), left bottom picture – common garden peony (*Paeonia lactiflora*) and common snipe (*Gallinago gallinago*), middle picture – oleander (*Nerium indicum*) and long-tailed tit (*Aegithalos caudatus*), right top picture – Japanese morning glory (*Ipomoea nil*) and blue-and-white flycatcher (*Cyanoptila cyanomelana*), right bottom picture – grape (*Vitis vinifera*)



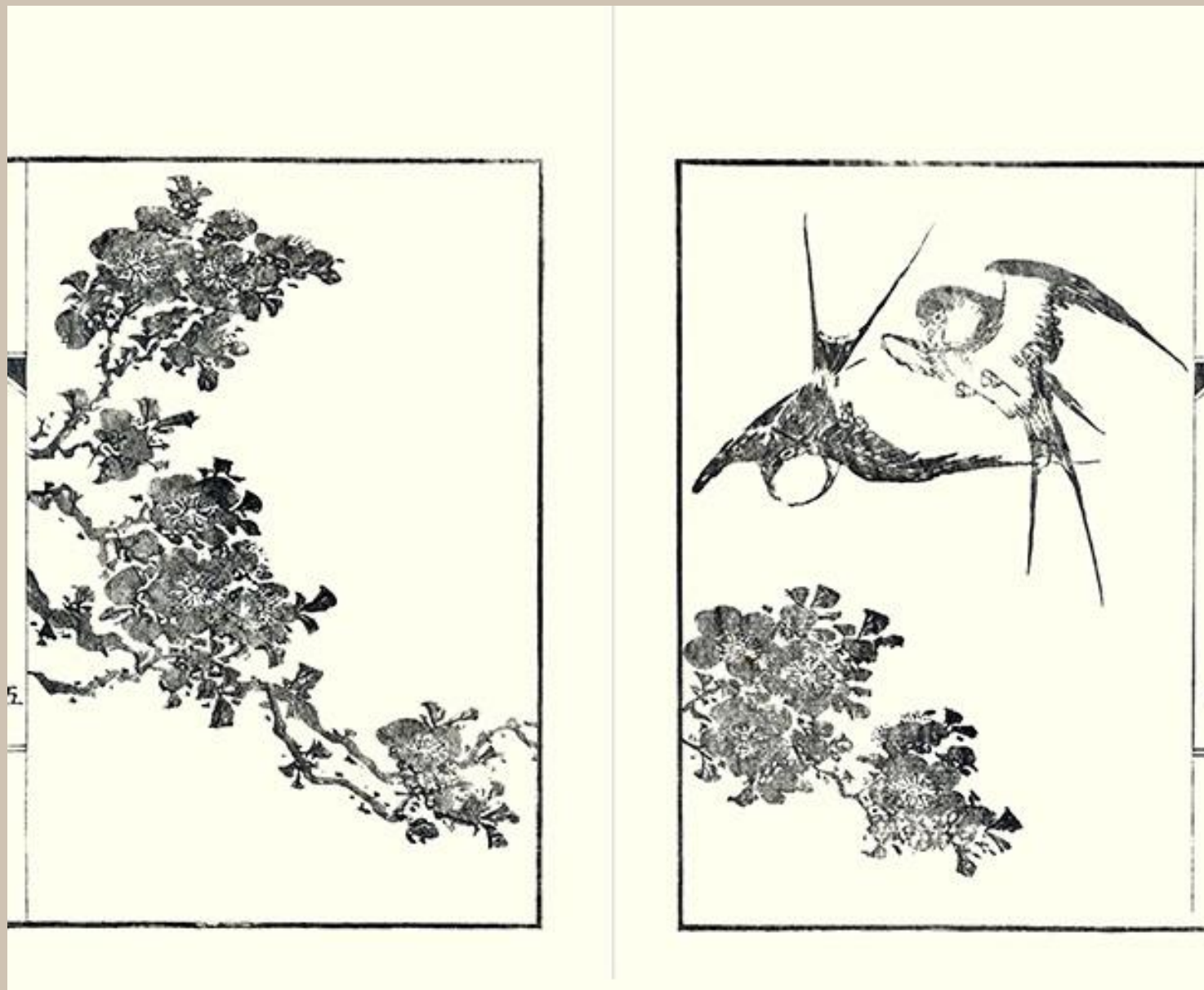
18 **Chikutō Kachō Gafu** (Picture Album of Flowers and Birds by Chikutō), undated, published by Unsōdō, copies of twenty of the twenty-one pictures included in *Yūsai Gafu*, 1846, drawn by Chikutō Nakabayashi, Nagasaki style, plum (*Prunus mume*), bunchflower daffodil (*Narcissus tazetta*) and mandarin duck (*Aix galericulata*)



19 **Kachō Gafu** (Picture Album of Flowers and Birds), 1888, ten pictures drawn by Katei Taki, Nagasaki style, peach (*Prunus persica*) and barn swallow (*Hirundo rustica*)



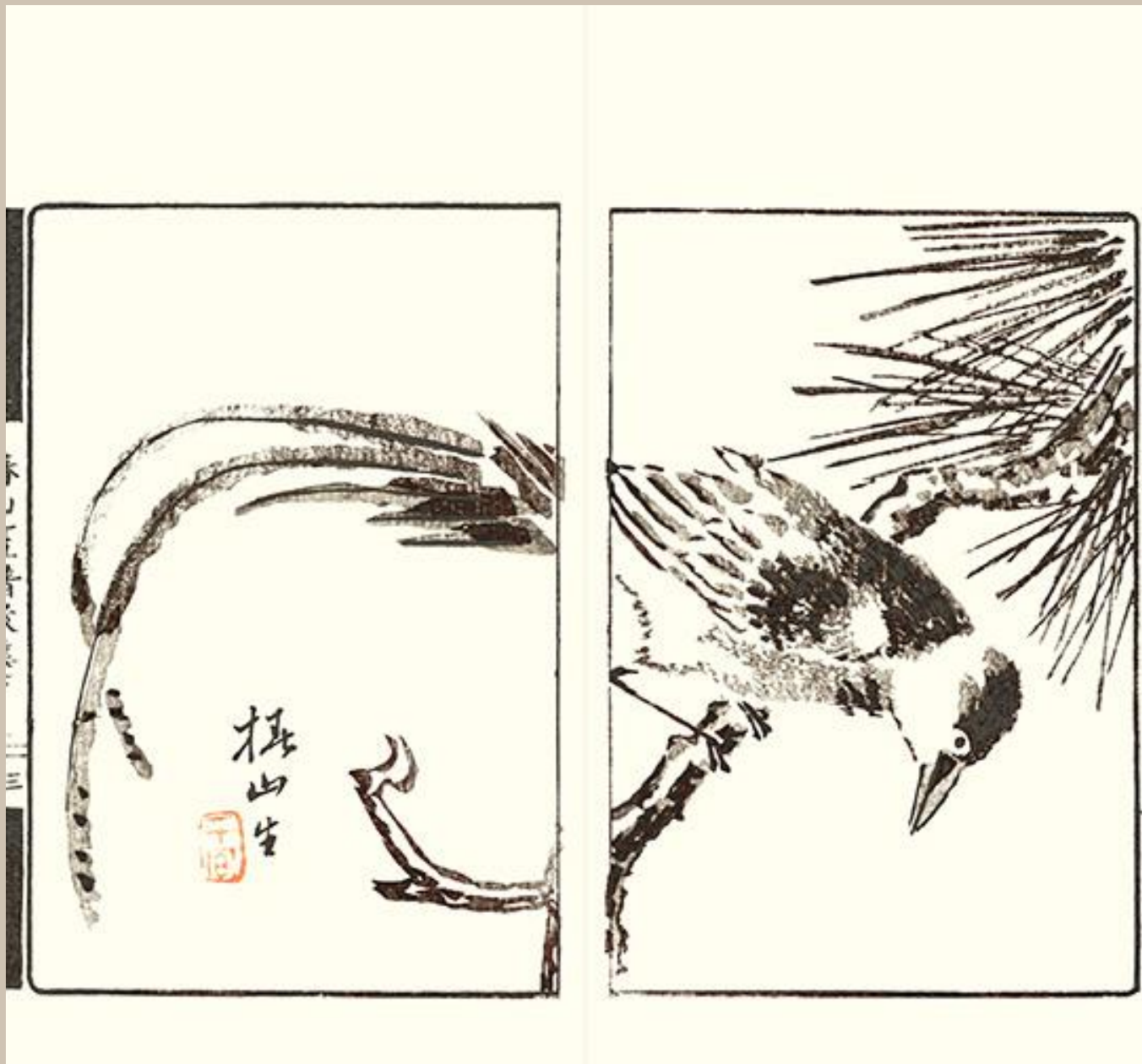
20 **Nanga Kachō Gafu** (Picture Album of Nanga-style Flowers and Birds), undated, published by Shōzandō Shoten, copies of twenty-six pictures included in *Gentai Sensei Gafu* (Picture Album by Master Gentai), 1805, drawn by Gentai Watanabe, Nanga style, apricot (*Prunus armeniaca*) and barn swallow (*Hirundo rustica*)



21 **Chinzan Gafu** (Picture Album by Chinzan), 1880, thirty-six pictures drawn by Chinzan Tsubaki, Nanga style, sacred lotus (*Nelumbo nucifera*) and common kingfisher (*Alcedo atthis*)



22 **Chinzan Gafu Kōshū** (Picture Album by Chinzan Later Compilation), 1880, twenty-nine pictures drawn by Chinzan Tsubaki, Nanga style, magpie (Family Corvidae)



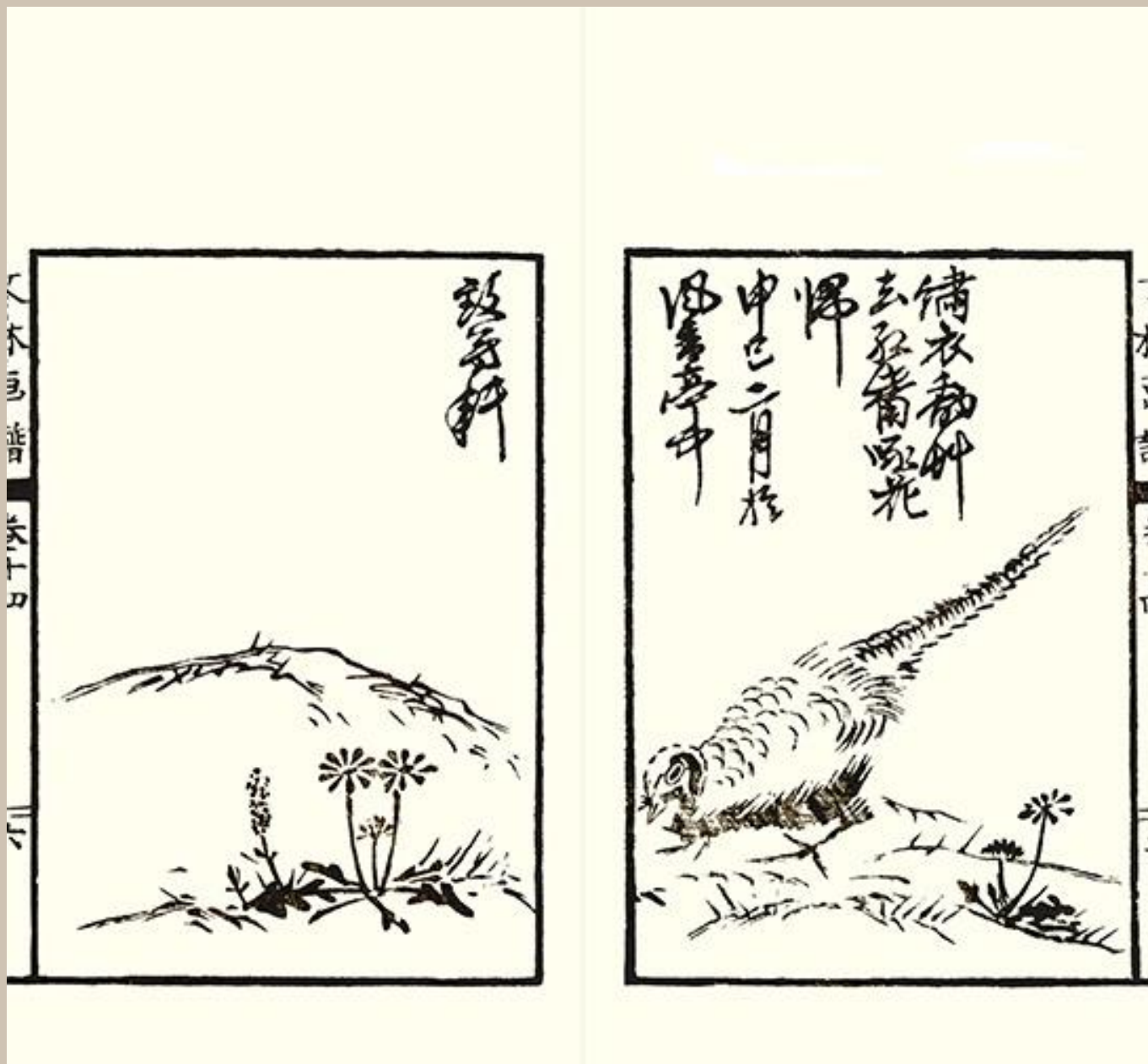
23 **Bijutsu Gafu** (Picture Album of Fine Arts), 1892, published by Katsugorō Inoue, twenty-nine pictures, Nanga style, left picture – common garden peony (*Paeonia lactiflora*), right picture – florist's chrysanthemum (*Chrysanthemum grandiflorum*)



24 **Kazan Gafu** (Picture Album by Kazan), 1907, twenty-four pictures drawn by Kazan Watanabe, Nanga style, sweet osmanthus (*Osmanthus fragrans*) and Eurasian bullfinch (*Pyrrhula pyrrhula*)



25 **Bunrin Gafu** (Picture Album by Bunrin), 1883, edited by Motoyasu Sano, seventy-six pictures, Nanga style, dandelion (*Taraxacum* sp.) and green pheasant (*Phasianus versicolor*)



26 **Takukadō Gafu** (Picture Album by Takukadō), 1880, forty pictures drawn by Chinzan Tsubaki, Nanga style, magnolia (*Magnolia* sp.) and unknown bird



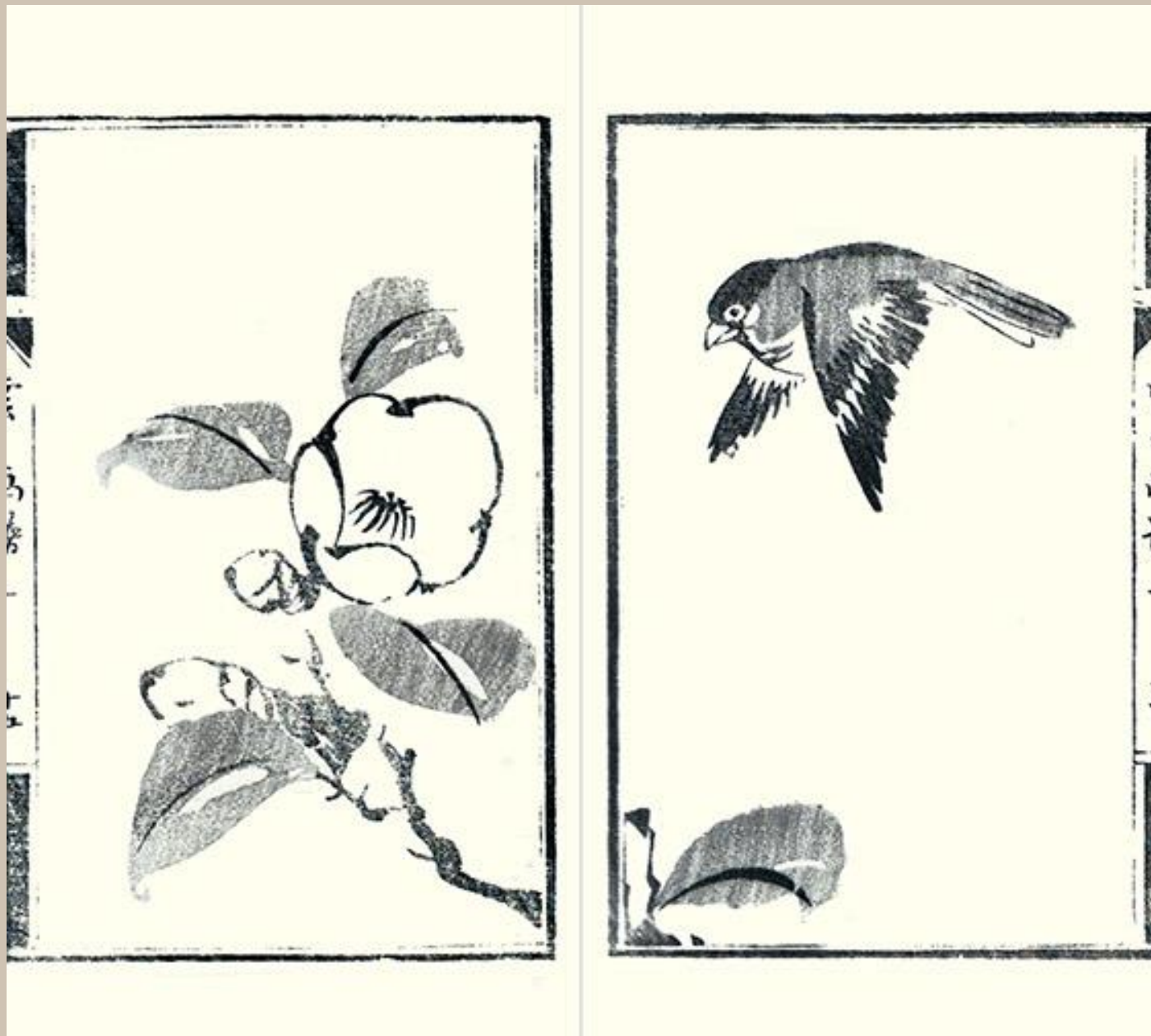
27 **Kachō Gafu** (Picture Album of Flowers and Birds), 1882, thirty-six pictures drawn by Ryūsai Ninjō, Nanga style, left picture – little egret (*Egretta garzetta*), right picture – plum (*Prunus mume*) and black bulbul (*Hypsipetes leucocephalus*)



28 **Kachō Gafu** (Picture Album of Flowers and Birds), 1882, twenty-one pictures drawn by Unga Tachibana, Nanga style, cotton-rose (*Hibiscus mutabilis*) and domestic goose (*Anser cygnoides*)



29 **Unzan Gafu** (Picture Album by Unzan), 1880, forty pictures drawn by Unzan Yamazaki, Nanga style, camellia (*Camellia japonica*) and Java sparrow (*Padda oryzivora*)



30 **Keibun Kachō Gafu Zenpen Kore** (Picture Album of Flowers and Birds by Keibun First Volume), 1892, edited by Gessai Fukui, copies of twelve paintings by Keibun Matsumura (1779-1843), Maruyama-Shijō style, plum (*Prunus mume*) and mandarin duck (*Aix galericulata*)



31 **Keibun Kachō Gafu Kōhen** (Picture Album of Flowers and Birds by Keibun Sequel), 1894, edited by Gessai Fukui, copies of twelve paintings by Keibun Matsumura (1779-1843), Maruyama-Shijō style, sunset hibiscus (*Hibiscus manihot*) and meadow bunting (*Emberiza cioides*)



号文花鳥畫譜後篇 七

景文
印

32 **Keibun Kachō Gafu Kōchitsu** (Picture Album of Flowers and Birds by Keibun Sequel), 1894, edited by Gessai Fukui, copies of twelve paintings by Keibun Matsumura (1779-1843), Maruyama-Shijō style, left picture – Japanese rose (*Rosa multiflora*) and lesser cuckoo (*Cuculus poliocephalus*), right picture – Japanese kerria (*Kerria japonica*) and common kingfisher (*Alcedo atthis*)



33 **Sho Taika Kachō Gafu** (Picture Album of Flowers and Birds by Various Masters), 1896, edited by Gessai Fukui, copies of forty-four paintings by Maruyama-Shijō School artists, left picture – mythical hō-ō bird, right picture –princess tree (*Paulownia tomentosa*) and mythical hō-ō bird



34 **Sho Meika Kachō Gafu** (Picture Album of Flowers and Birds by Various Famous Painters), 1898, edited by Gessai Fukui, copies of twelve paintings by Maruyama-Shijō School artists, left picture – Japanese morning glory (*Ipomoea nil*) and Eurasian tree sparrow (*Passer montanus*), right picture – China rose (*Rosa chinensis*) and Java sparrow (*Padda oryzivora*)



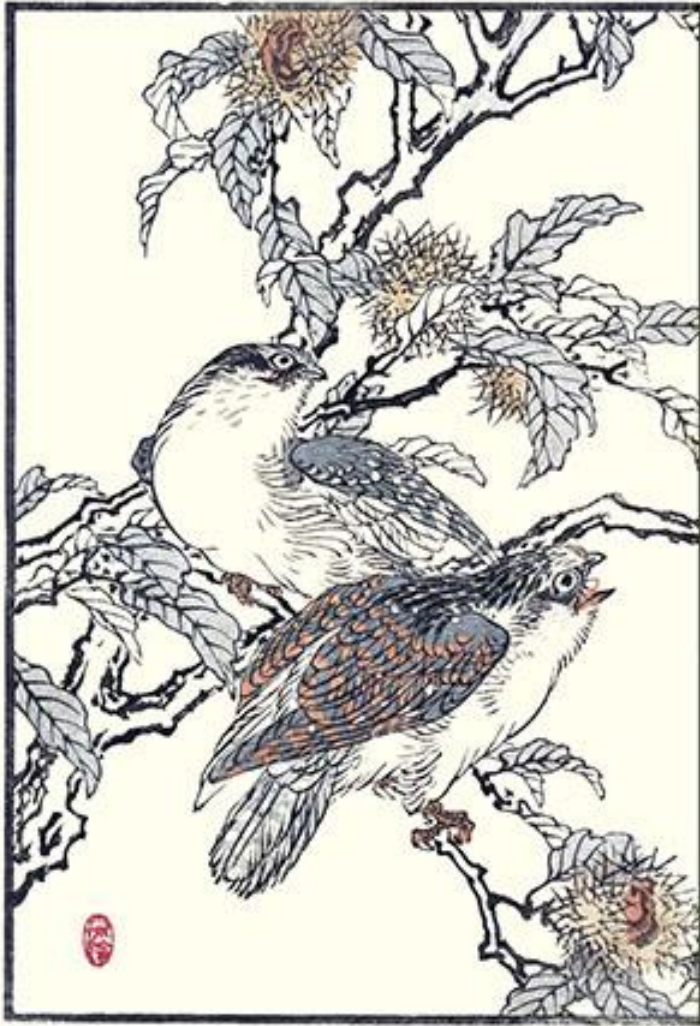
35 **Kan'ei Gafu** (Picture Album by Kan'ei), 1886, twenty-five pictures drawn by Kan'ei Nishiyama, Maruyama-Shijō style, Japanese mountain cherry (*Prunus serrulata*) and barn swallow (*Hirundo rustica*)



36 **Bairei Hyakuchō Gafu** (Picture Album of One Hundred Birds by Bairei), 1881, one hundred pictures drawn by Bairei Kōno, Nihonga style, left picture – false snowparsley (*Tilingia ajanensis*) and blue rock-thrush (*Monticola solitarius*), right picture – heavenly bamboo (*Nandina domestica*) and brown-eared bulbul (*Ixos amaurotis*)



37 **Bairei Hyakuchō Gafu Zokuhen** (Picture Album of One Hundred Birds by Bairei Sequel), 1884, one hundred pictures drawn by Bairei Kōno, Nihonga style, Japanese chestnut (*Castanea crenata*), brown hawk-owl (*Ninox scutulata*) and jungle nightjar (*Caprimulgus indicus*)



38 **Bairei Gafu** (Picture Album by Bairei), 1886, eighty-three pictures drawn by Bairei Kōno, Nihonga style, dandelion (*Taraxacum* sp.), field horsetail (*Equisetum arvense*) and skylark (*Alauda arvensis*)



39 **Bairei Kachō Gafu** (Picture Album of Flowers and Birds by Bairei), 1899, fifty pictures drawn by Bairei Kōno, Nihonga style, left picture – cockscomb (*Celosia cristata*), asiatic dayflower (*Commelina communis*) and common kingfisher (*Alcedo atthis*), right picture – hardy begonia (*Begonia grandis*), scabious patrinia (*Patrinia scabiosifolia*), balloon flower (*Platycodon grandiflorus*) and domestic fowl (*Gallus gallus*)



40 **Bunrei Kachō Gafu** (Picture Album of Flowers and Birds by Bunrei), 1885, one hundred pictures drawn by Bunrei Maekawa using pictures by Bairei Kōno as models, Nihonga style, Japanese laurel (*Aucuba japonica*) and goldcrest (*Regulus regulus*)



42 **Shōkei Kachō Gafu** (Picture Album of Flowers and Birds by Shōkei), 1895, edited by Gessai Fukui, copies of twelve paintings by Shōkei Yamada, Nihonga style, tree peony (*Paeonia suffruticosa*) and narcissus flycatcher (*Ficedula narcissina*)



43 **Kinsei Meika Kachō Gafu** (Picture Album of Flowers and Birds by Famous Painters of Recent Times), 1898, edited by Gessai Fukui, copies of twelve paintings by artists of the Nihonga School, florist's chrysanthemum (*Chrysanthemum grandiflorum*) and mandarin duck (*Aix galericulata*)



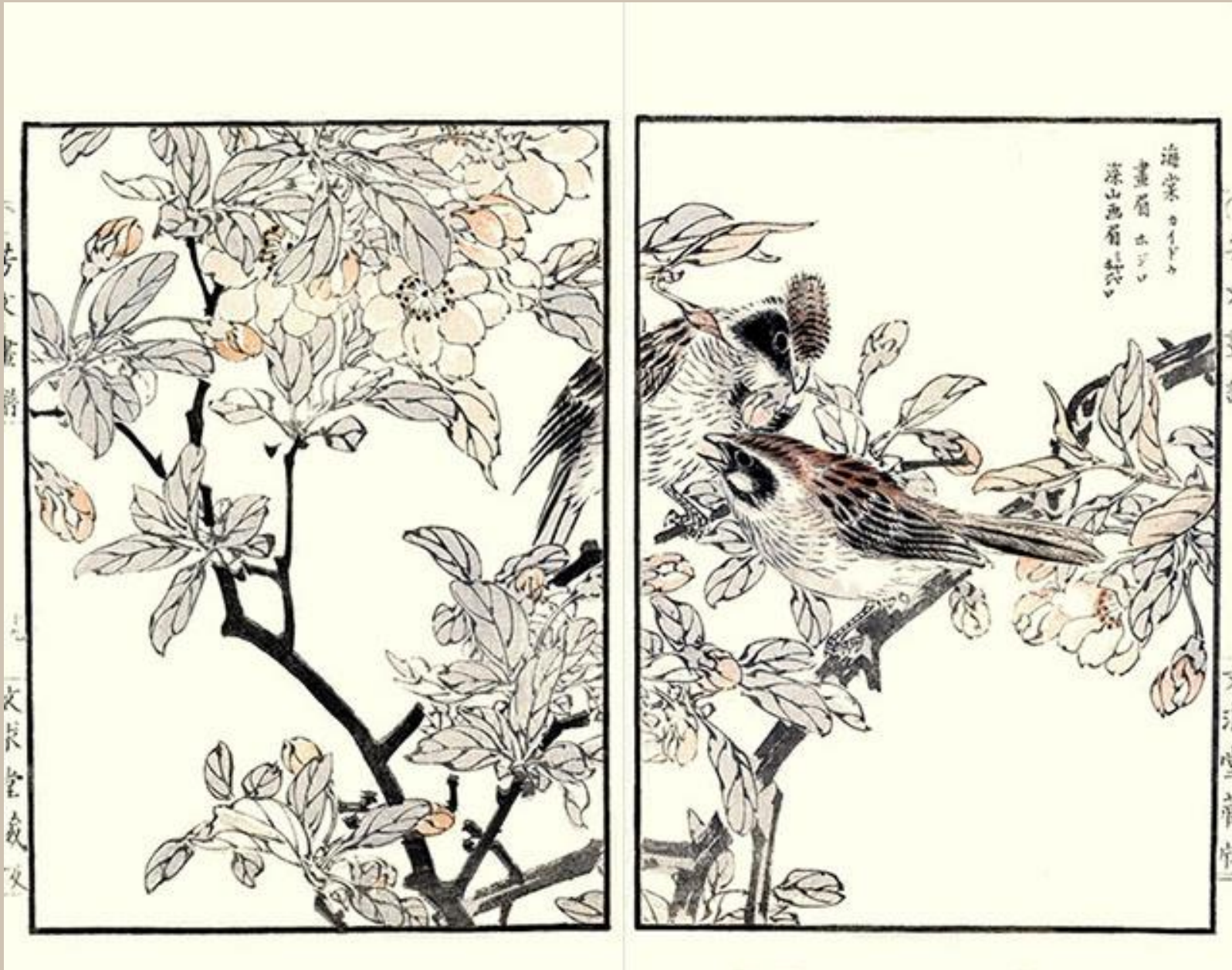
44 **Kachō Gafu** (Picture Album of Flower and Birds), 1898, nineteen pictures drawn by Ginkō Adachi, Nihonga style, Goering's cymbidium (*Cymbidium goeringii*) and green peafowl (*Pavo muticus*)



45 **Shiki Kachō Gafu** (Picture Album of Flowers and Birds of the Four Seasons), 1891, eighty pictures drawn by Gyoshi Kōsoku, Nihonga style, sacred lotus (*Nelumbo nucifera*) and domestic goose (*Anser cygnoides*)



46 **Hōbun Gafu** (Picture Album by Hōbun), 1890, thirty-eight pictures drawn by Hōbun Kikuchi, Nihonga style, Hall crabapple (*Malus halliana*), meadow bunting (*Emberiza cioides*) and yellow-throated bunting (*Emberiza elegans*)



47 **Shūchō Gafu** (Picture Album of Birds), 1912, one hundred and four pictures drawn by Kashū Numata, Nihonga style, cherry (*Prunus* sp.) and Ural owl (*Strix uralensis*)



48 **Keinen Kachō Gafu** (Picture Album of Flowers and Birds by Keinen), 1891-92, one hundred and thirty four pictures drawn by Keinen Imao, Nihonga style, tree peony (*Paeonia suffruticosa*) and blue-and-white flycatcher (*Cyanoptila cyanomelana*)



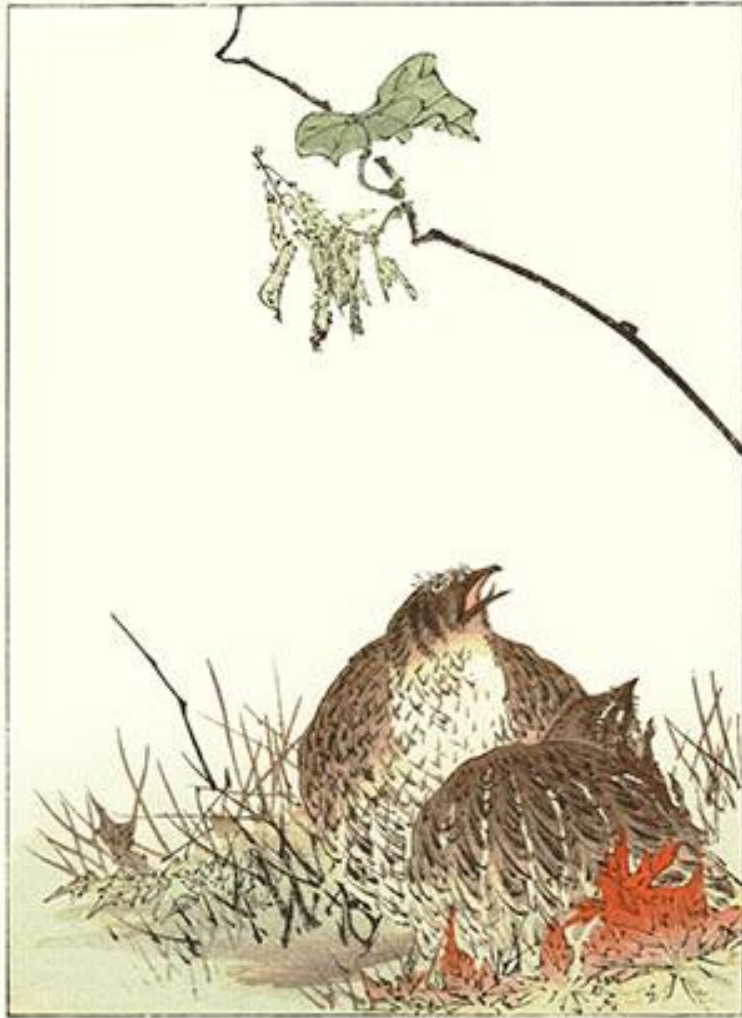
49 **Hyakukō Gafu** (Picture Album of One Hundred Ideas), 1893, one hundred and twenty-four pictures drawn by Kitarō Hayashi, Nihonga style, left picture- bunchflower daffodil (*Narcissus tazetta*) and black-billed magpie (*Pica pica*), right picture – white-fronted goose (*Anser albifrons*)



50 **Kachō Gafu** (Picture Album of Flowers and Birds), 1895, sixteen pictures drawn by Kōsetsu Sakata, Nihonga style, florist's chrysanthemum (*Chrysanthemum grandiflorum*) and Eurasian tree sparrow (*Passer montanus*)



51 **Kachō Gafu** (Picture Album of Flowers and Birds), 1896, eight pictures drawn by Kōtei Fukui, Nihonga style, kudzu (*Pueraria lobata*) and Japanese quail (*Coturnix japonica*)



52 **Seitei Kachō Gafu** (Picture Album of Flowers and Birds by Seitei), 1890-91, sixty-six pictures drawn by Seitei Watanabe, Nihonga style, plum (*Prunus mume*) and common hill myna (*Gracula religiosa*)



53 **Kachō Gafu** (Picture Album of Flowers and Birds by Seitei), 1903, twenty-two pictures drawn by Seitei Watanabe, Nihonga style, cherry (*Prunus* sp.) and Eurasian tree sparrow (*Passer montanus*)



54 **Shōkoku Kachō Gafu** (Picture Album of Flowers and Birds by Shōkoku), 1901, eight pictures drawn by Shōun Yamamoto, Nihonga style, dandelion (*Taraxacum* sp.), violet (*Viola* sp.), field horsetail (*Equisetum arvense*), cherry petals (*Prunus* sp.) and copper pheasant (*Syrnaticus soemmerringii*)



55 **Nihon Gafu Kachō no Bu** (Picture Album of Japan Flower and Bird Section), 1897, fifteen pictures drawn by Toshinobu Taguchi, Nihonga style, weeping cherry (*Prunus subhirtella*) and Japanese white-eye (*Zosterops japonicus*)



[Back to Exhibitions](#)